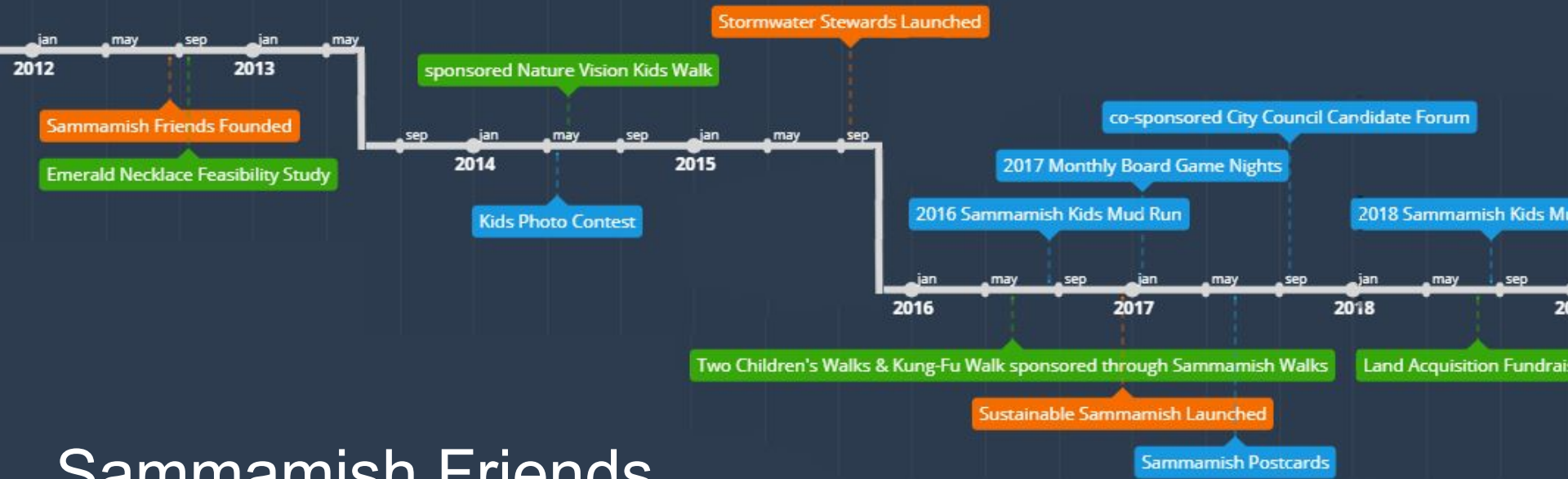


# Sammamish Friends



Evans Creek Preserve

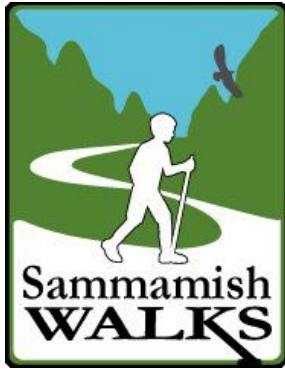


# Sammamish Friends through the years

# The Big Ideas

- Preserve Our Natural Resources
- Bring People Together
- Foster a Sense of Ownership of the Community
- Support Other Groups That Make it Happen
- Provide a Framework for Individual Voices





# Sammamish Walks

## Since 2009

- Trail maps, directions, and park info on website
- Scheduled volunteer-led walks provide info on plants, wildlife, history, art, and wellness





# Sammamish Community Wildlife Habitat



Since 2008  
Certified 2011



# Sammamish Stormwater Stewards

2016

2021



# Sammamish Native Plant Stewards

Since 2009

- 7 sites salvaged before development
- 6 restoration sites in Sammamish parks



**2016:** Over 3,250 trees and shrubs planted; 250+ plants salvaged; 200+ volunteers giving 550+ hours

**2017:** 450+ plants salvaged

# 2019 Sammamish Native Plant Nursery





# 2022 Sammamish Native Plant and Seed Exchange





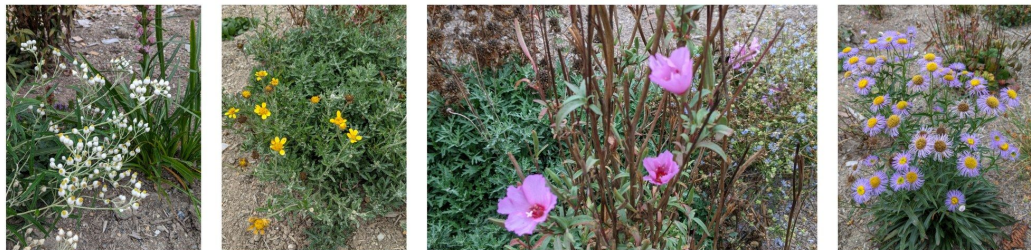
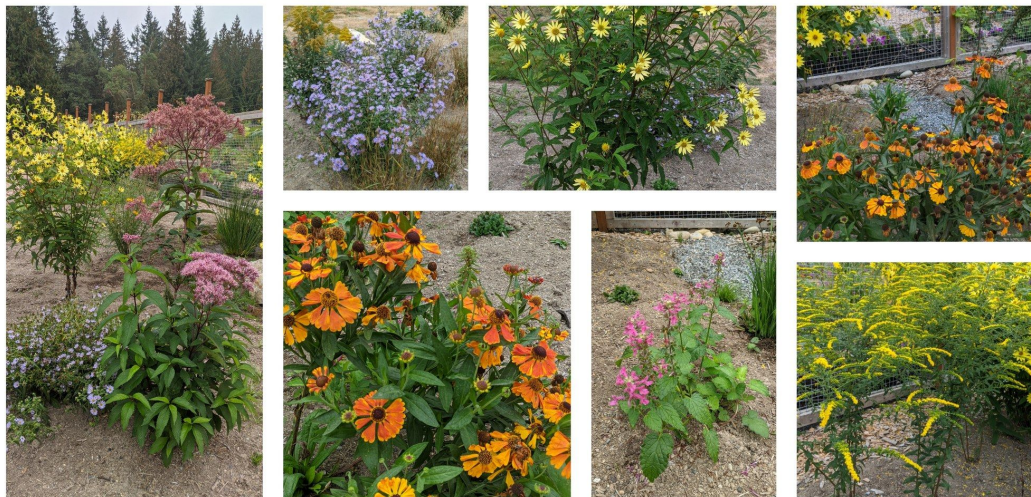
# Sammamish Botanical Garden Society

Since 2019



- **SF provided \$800 grant in 2021**



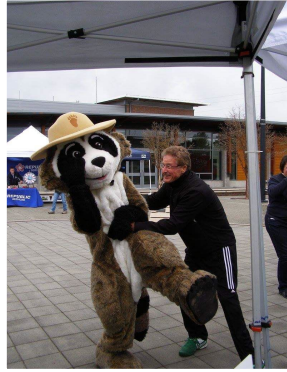


**2022  
Sammamish  
Native Plant  
Pollinator  
Garden  
at  
Big Rock Park**

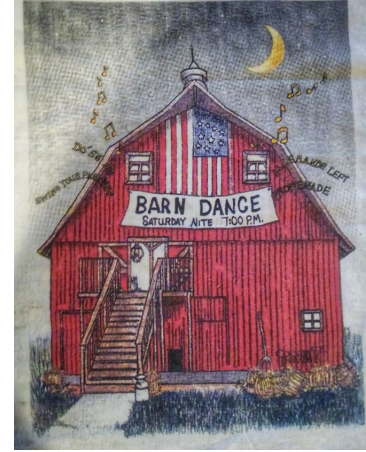


# Community Catalyst

## Connecting People



- Kids Mud Run @ POP
- Community Booths:
  - Farmer's Market
  - Earth Day
  - Sustainable Sammamish



- 2018 Barn Dance & Fundraiser
- Board Game Nights
- Sammamish Postcards





2016

200 kids and  
over 70 volunteers

2018

Over 350 participants





2019 - Nearly **400** runners

2022 - A total of **483** participants!





Partnering with:

- King County Parks
- City of Sammamish
- Mtns to Sound Greenway
- Issaquah Alps Trails Club
- And others



East Lake Sammamish Trail

Issaquah Preston Trail

Grand Ridge Trail

Duthie Hill and Trossachs

Soaring Eagle

Potential Trail to  
Evans Creek Preserve

and back to the East Lake  
Sammamish Trail

**Approx. 28 miles in all**





Left to right: Sammamish Councilman Don Gerend, David Kappler, Jim Berry, Ben Hughey-Policy and GIS Specialist with Mountains to Sound Greenway, King County Natural Resource Land Program Manager Connie Blumen.

**2012 – Feasibility study from Soaring Eagle to Evans Creek Preserve.**

**2015 – King County purchased two DNR parcels north of Soaring Eagle.**

**2016 – Reapplied for grant for land acquisition.**

**2014 meeting with King County Conservation Futures Citizens Committee**

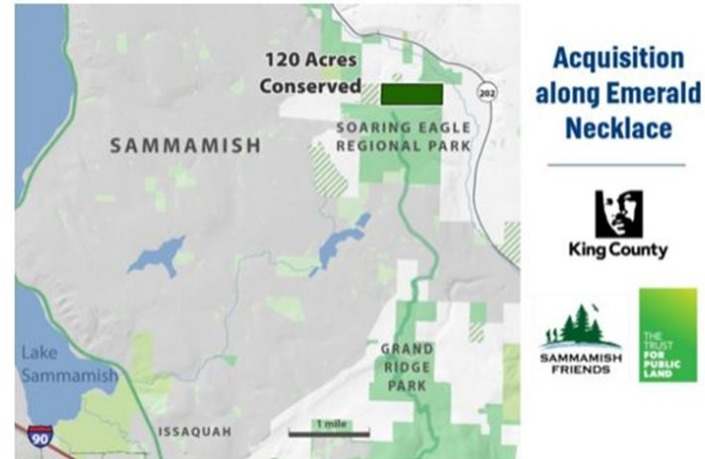




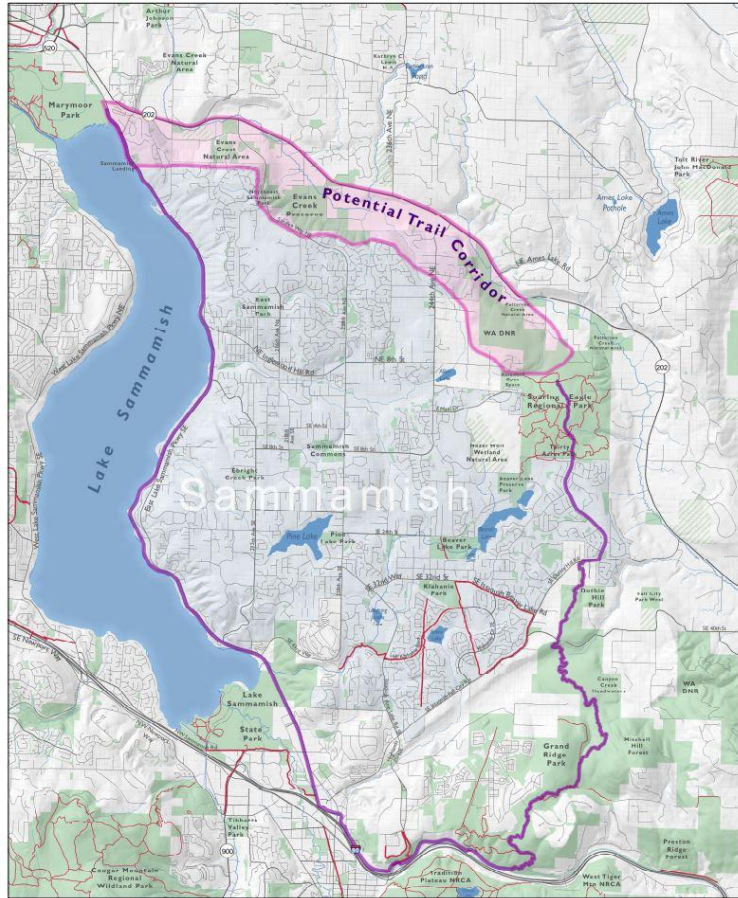
# 2017 – King County and Trust for Public Lands added 120 acres north of Soaring Eagle.

## Soaring Eagle Addition

A major effort is underway to preserve open space around the rapidly developing Sammamish Plateau. Called “the Emerald Necklace,” it is envisioned as an interconnected series of parks and trails that will eventually encircle the City of Sammamish. A local band of advocates, called Sammamish Friends, have taken it upon themselves to fill in the remaining gaps, mostly in the northern section of the loop. Earlier this year, King County Parks and the Trust for Public Land added 120 acres along the route, adjacent to Soaring Eagle Park.



# Emerald Necklace



**2020 - King County and Trust for Public Lands added 2 more parcels north of Soaring Eagle.**

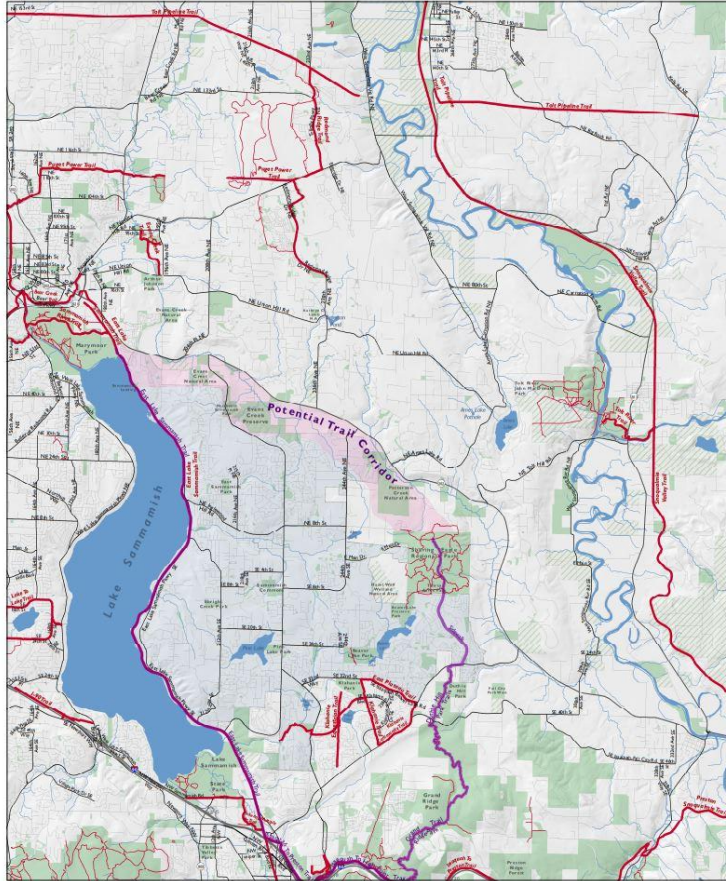
**MOUNTAINS to Sound GREENWAY**

<b>Emerald Necklace</b>	<b>Existing Trails</b>	<b>Land Ownership</b>	Prepared for Sammamish Friends, a 501(c)(3) non-profit organization that provides opportunities for Sammamish residents and neighbors to preserve and enhance our habitat and to enrich our community. Please visit us at: <a href="http://www.sammamishfriends.org">www.sammamishfriends.org</a> Prepared by the Mountains to Sound Greenway Trust. Data compiled from various sources and is subject to change without notice. Updated January 2022.
<ul style="list-style-type: none"> <li><span style="display: inline-block; width: 15px; height: 10px; background-color: purple; border: 1px solid black; margin-right: 5px;"></span> Existing Route</li> <li><span style="display: inline-block; width: 15px; height: 10px; border: 1px dashed purple; margin-right: 5px;"></span> Proposed Corridor</li> <li><span style="display: inline-block; width: 15px; height: 10px; border: 1px solid grey; margin-right: 5px;"></span> City of Sammamish Boundary</li> </ul>	<ul style="list-style-type: none"> <li><span style="display: inline-block; width: 15px; height: 10px; border-bottom: 1px solid red; margin-right: 5px;"></span> Local Trail</li> <li><span style="display: inline-block; width: 15px; height: 10px; border-bottom: 1px solid red; margin-right: 5px;"></span> Regional Trail</li> </ul>	<ul style="list-style-type: none"> <li><span style="display: inline-block; width: 15px; height: 10px; background-color: white; border: 1px solid black; margin-right: 5px;"></span> Private</li> <li><span style="display: inline-block; width: 15px; height: 10px; background-color: #d3d3d3; border: 1px solid black; margin-right: 5px;"></span> Conserved Private</li> <li><span style="display: inline-block; width: 15px; height: 10px; background-color: #90ee90; border: 1px solid black; margin-right: 5px;"></span> Public</li> </ul>	

0 0.5 1 1.5 2 2.5 Miles

## Emerald Necklace

Our dream - completing a trail around the Sammamish Plateau



The Emerald Necklace will provide a **buffer between urban and rural areas**

with scenic recreational and educational opportunities. In addition, the acquisition of land will connect the public lands already in that corridor and increase the benefits towards a healthier wildlife corridor and natural area.

## Potential trail connections

north to the Redmond Ridge trails and the Tolt Pipeline Trail, and east to the Snoqualmie Valley Trail.

# 2022 Sammamish Seniors



- Joined Sammamish Friends board
- Strategic planning
- Applying for RFP grant with City of Sammamish



Helping those in  
Sammamish  
make it happen!



**SAMMAMISH  
FRIENDS**